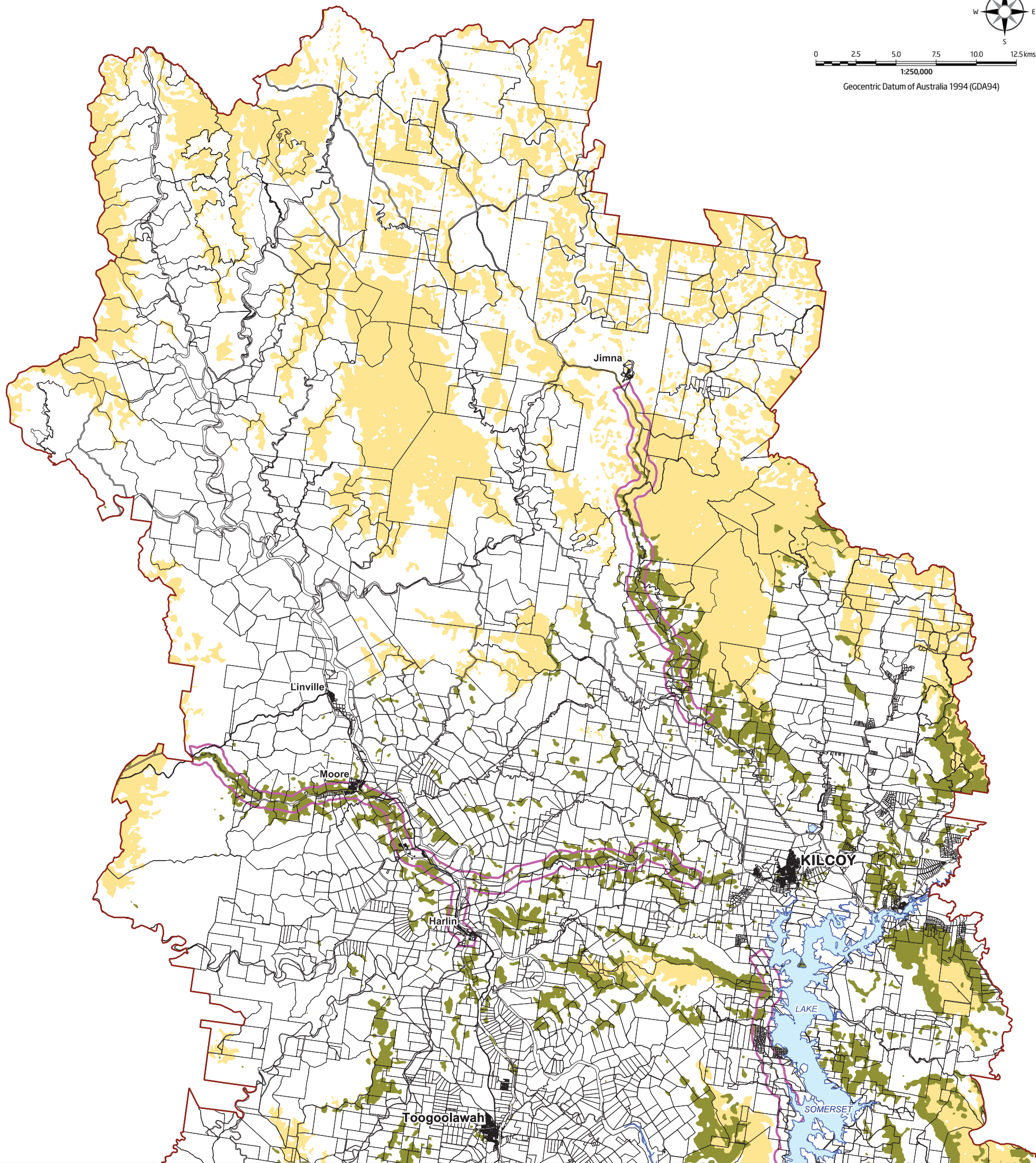


1:250,000
Geocentric Datum of Australia 1994 (GDA94)



Legend

- High Scenic Amenity Area
SAM2004 Scenic Amenity ratings 9 & 10A, plus rating 8 within 500m of major routes, and lakes within view of major routes
- Other Scenic Mountains
Areas above 400m elevation with SAM2004 Scenic Amenity ratings 6,7 & 8
- Scenic Route Section (500 metre buffer)
- Other**
- Waterbody
- Cadastre
- Somerset Regional Council Boundary

Disclaimer
Whilst every care is taken to ensure the accuracy of this product, neither the Somerset Regional Council or the State of Queensland make any representations or warranties about its accuracy, reliability, completeness or suitability for any particular purpose and disclaims all responsibility and all liability (including without limitation, liability in negligence) for all expenses, losses, damages (including indirect or consequential damage) and costs that may occur as a result of the product being inaccurate or incomplete in any way or for any reason.
Scenic amenity data: Chenoweth Environmental Planning and Landscape Architecture (Biodiversity and Habitat Study December 2010 and Scenic Amenity Study August 2011).
All other data depicted on this map has been sourced from either the Somerset Regional Council or the State of Queensland from the latest datasets available at the time of map compilation.
Map compilation date: 1st March 2016.
Crown & Council Copyright Reserved.

