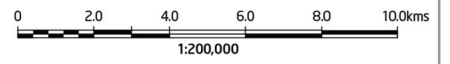
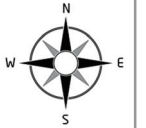
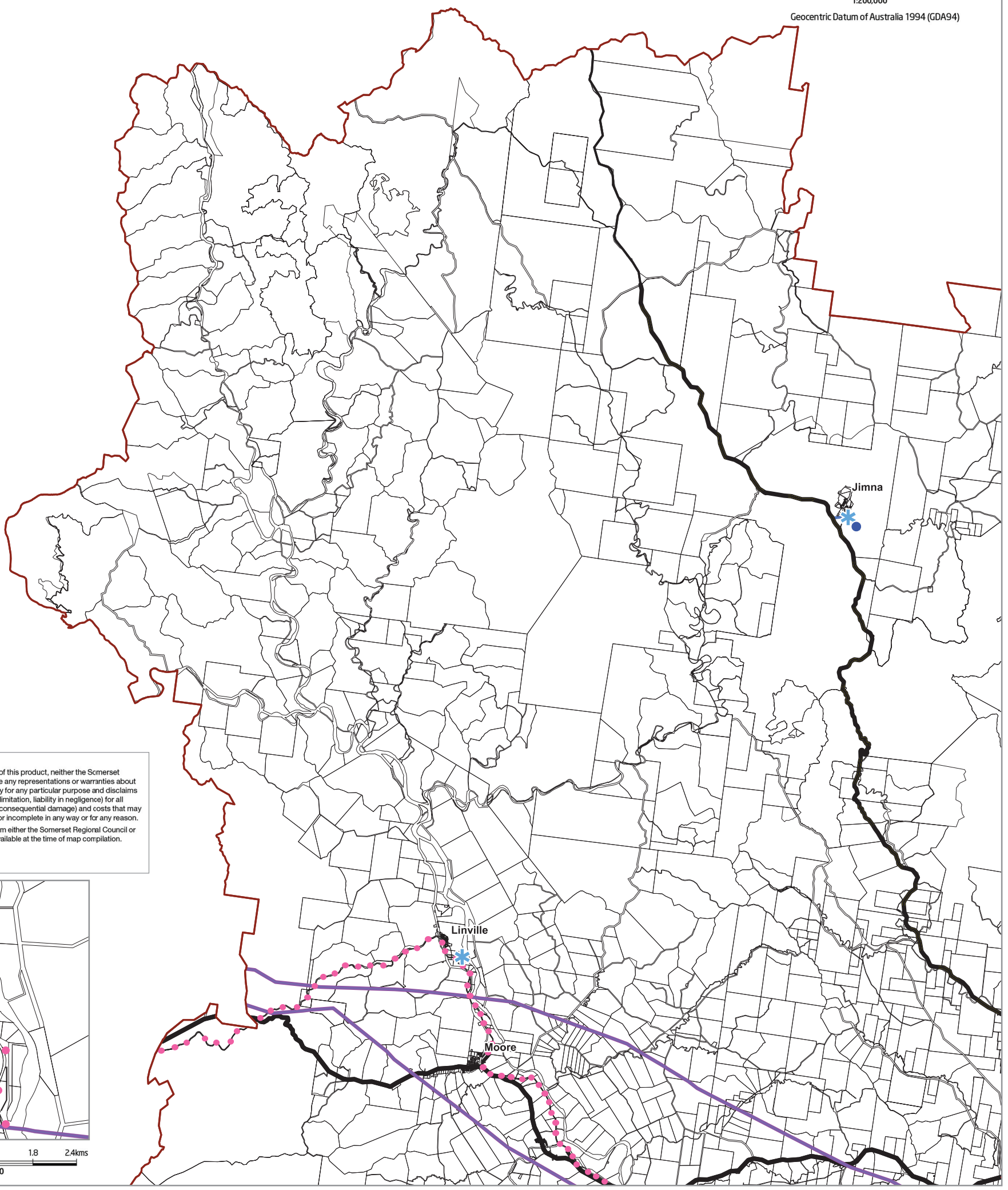


**Note** Section 807 and 808 of the *Petroleum and Gas (Production and Safety) Act 2004* requires that a person must not construct or place a structure on pipeline land unless all the pipeline licence holders consent, and that a person must not change the surface of pipeline land unless the pipeline licence holder consents.



Geocentric Datum of Australia 1994 (GDA94)



**Disclaimer**

Whilst every care is taken to ensure the accuracy of this product, neither the Somerset Regional Council or the State of Queensland make any representations or warranties about its accuracy, reliability, completeness or suitability for any particular purpose and disclaims all responsibility and all liability (including without limitation, liability in negligence) for all expenses, losses, damages (including indirect or consequential damage) and costs that may occur as a result of the product being inaccurate or incomplete in any way or for any reason. All data depicted on this map has been sourced from either the Somerset Regional Council or the State of Queensland from the latest datasets available at the time of map compilation. Map compilation date: 1st March 2016. Crown & Council Copyright Reserved.



Linville 0 0.6 1.2 1.8 2.4kms  
1:60,000

**Legend**

**Utilities**

- 500kV Electricity Transmission Line
- 500kV Electricity Transmission Line Buffer (40 metres)
- 275kV Electricity Transmission Line
- 275kV Electricity Transmission Line Buffer (30 metres)
- 110kV Electricity Transmission Line
- 33kV Electricity Transmission Line
- Gas Pipeline
- Gas Pipeline Buffer (50 metres)
- Water Pipeline
- Power Station
- Power Station Buffer (250 metres)
- Substation
- Sewage Treatment Plant
- Sewage Treatment Plant Buffer (500 metres)
- Waste Station
- Waste Station Buffer (500 metres)

- Water Treatment Plant
- Water Treatment Plant Buffer (100 metres)
- Water Pump Station
- Water Reservoir

**Transport**

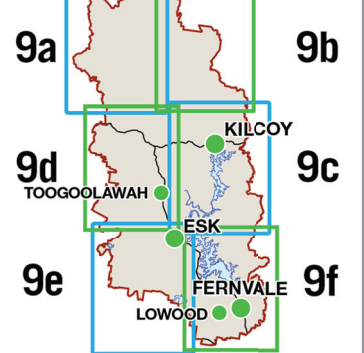
- Highway
- Main Road
- Highway or Main Road Buffer (50 metres)
- Kilcoy Bypass Area of Influence
- Future Principal Route, SEQ Principal Cycle Network Plan

**Other**

- Brisbane Valley Rail Trail
- Waterbody
- Cadastre
- Somerset Regional Council Boundary



**Map Index**



Map enlargements of Kilcoy, Toogoolawah, Esk, Lowood and Fernvale are shown on Overlay Map OM009g